

Focus on effort

Mind the difference between labelling ("You're so smart.") and learning process ("I loved how you solved that problem.").



GROWTHMINDS



High expectations

If my teacher feels I can't do it, then I probably can't.



GROWTHMINDS



Promote positive self talk

I haven't failed. I've just found 10.000 ways that won't work (Thomas Edison).



GROWTHMINDS

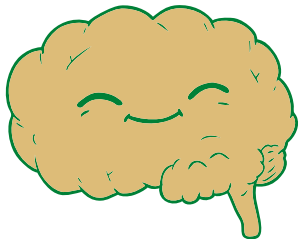


Growth oriented feedback

It's great that you have that down. Now we need to find something a bit more challenging so you can grow.



GROWTHMINDS



Brain as a muscle

Keep the conversation about the growth mindset alive.



GROWTHMINDS